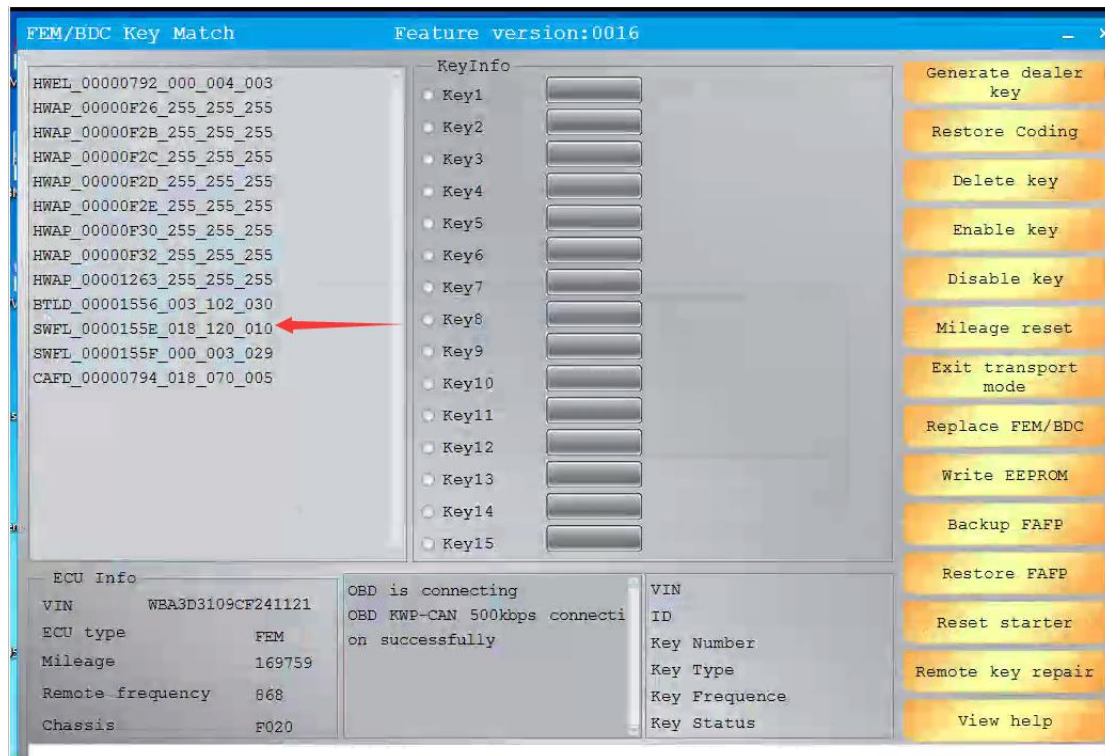


How to solve FEM fail to do mileage reset



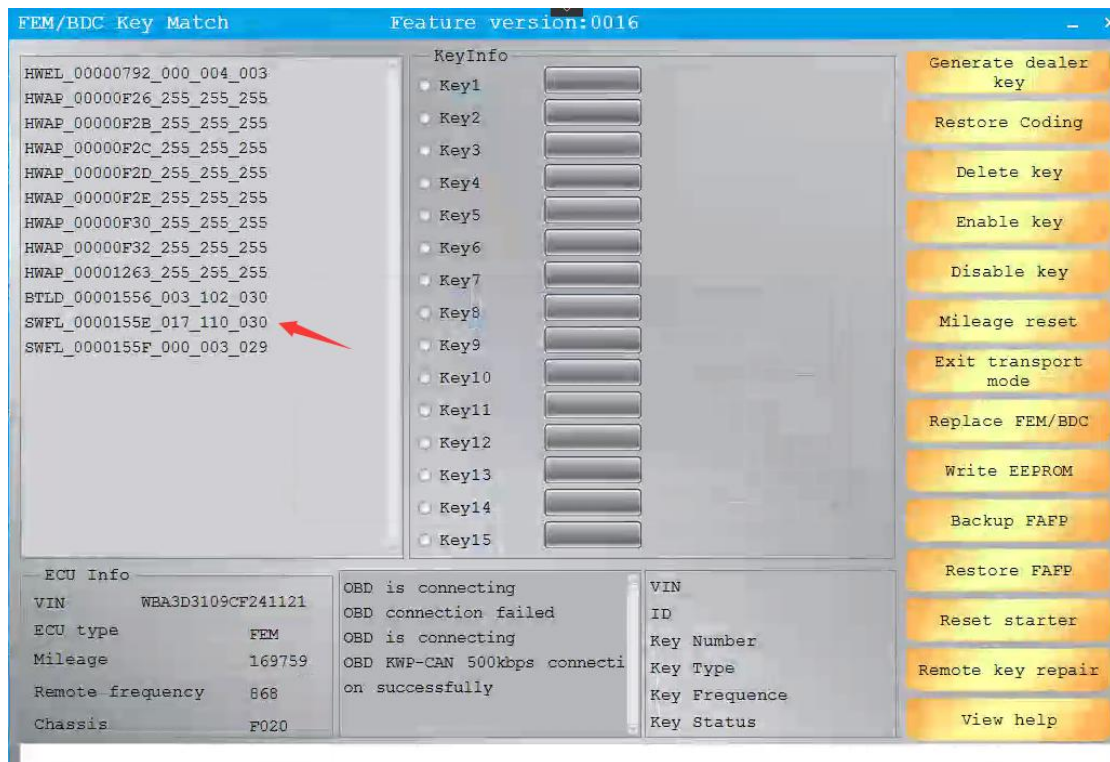
Do mileage reset , If it shows you **SWFL_0000155E_018_120_010** in the pic ,means it not support to do mileage reset .

How to solve it ?

We go to BMW F/G series program page ,Then choose advanced mode

Choose **SWFL_0000155E_017_110_030** version ,then to program (make sure battery voltage is enough)

FEM/BDC key match page to check the version again



Then you need to do reprocessing steps again .

Then the mileage reset can work