



How to Reset BMW FRM3 XEQ384 with Xhorse VVDI Prog

Here's the guide to restore the original eeprom from Dflash to repair BMW E-series FRM (BMW Footwell Module) module by using [Xhorse VVDI Prog programmer](#).

Note:

VVDI Prog adds FRM-E-SERIES-XEQ384 and FRM-F-SERIES-XET512 read & write options since version 4.6.8 (check pinout connection to VVDI Prog in the end of the post).

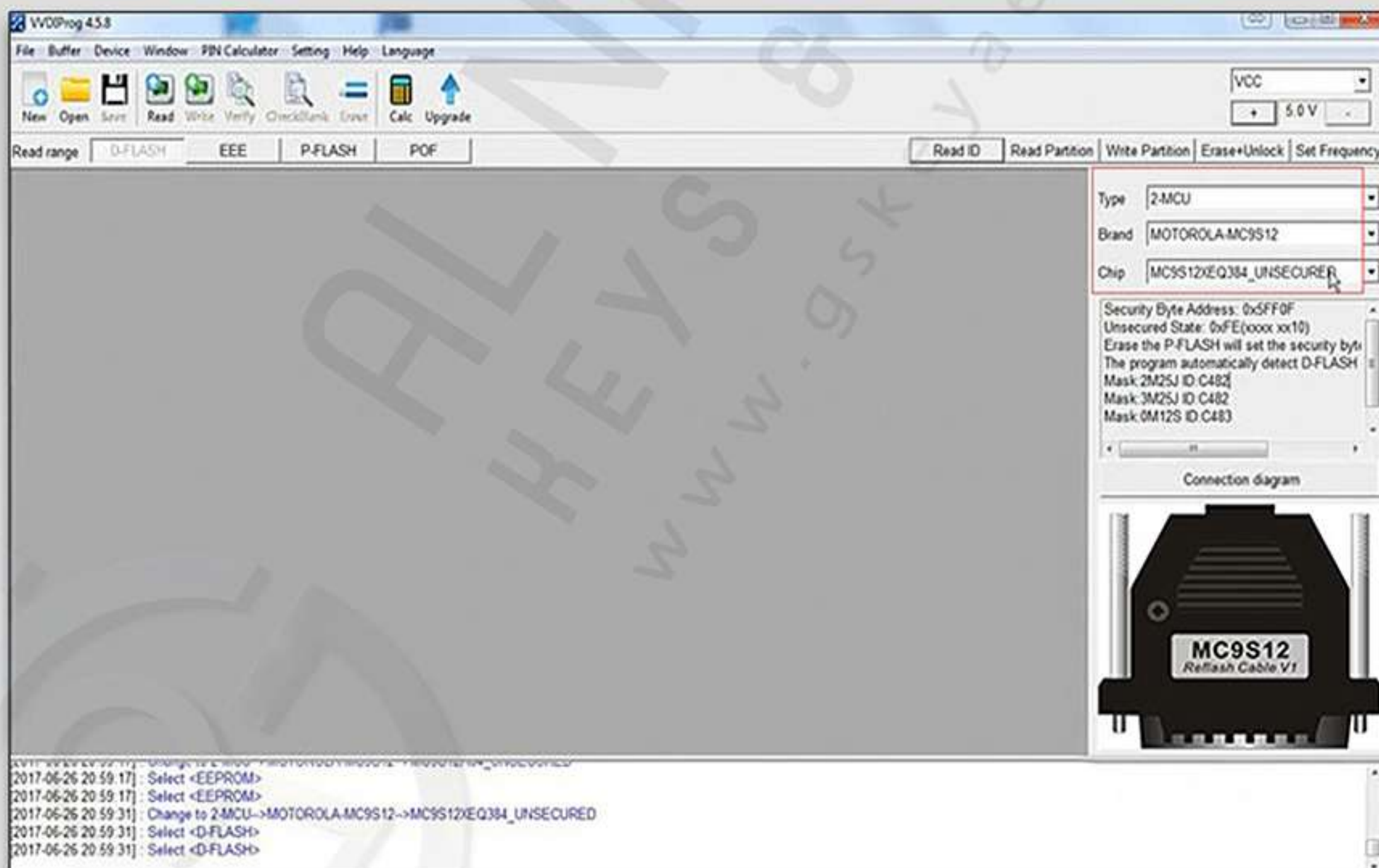
Here takes an example on BMW E-series E71

Step 1: Read Dflash

Connect FRM module with VVDI prog

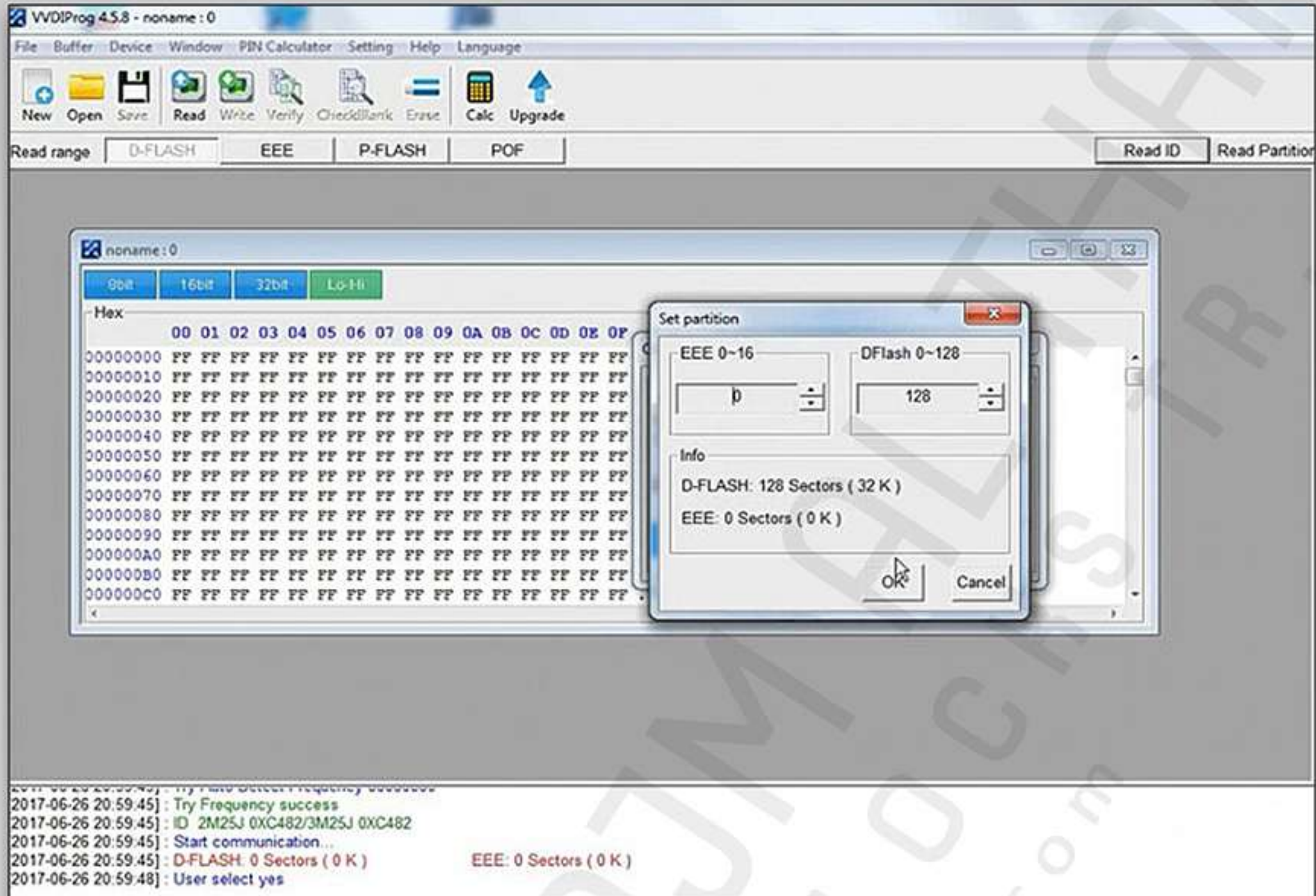
Open VVDI prog software

Select MCU->Motorola -MC9S12->9S12XEQ384 unsecured

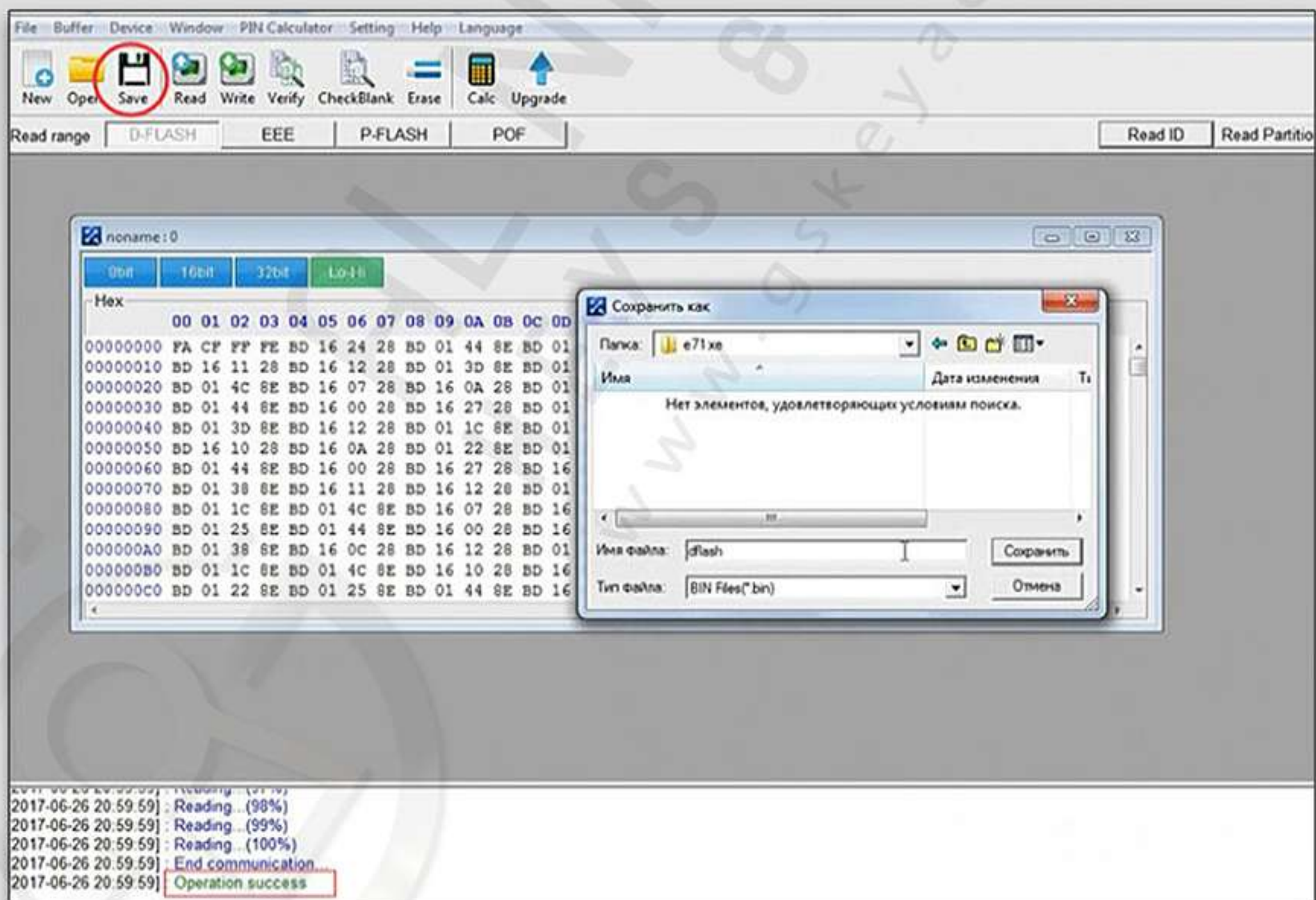




If vvdI prompts "Partition information error, please select the partition size manually"
Select the partition size EEE:0 sector, DFlash: 128 sectors (32K), press OK



Read and then save Dflash, i.e E71 xe





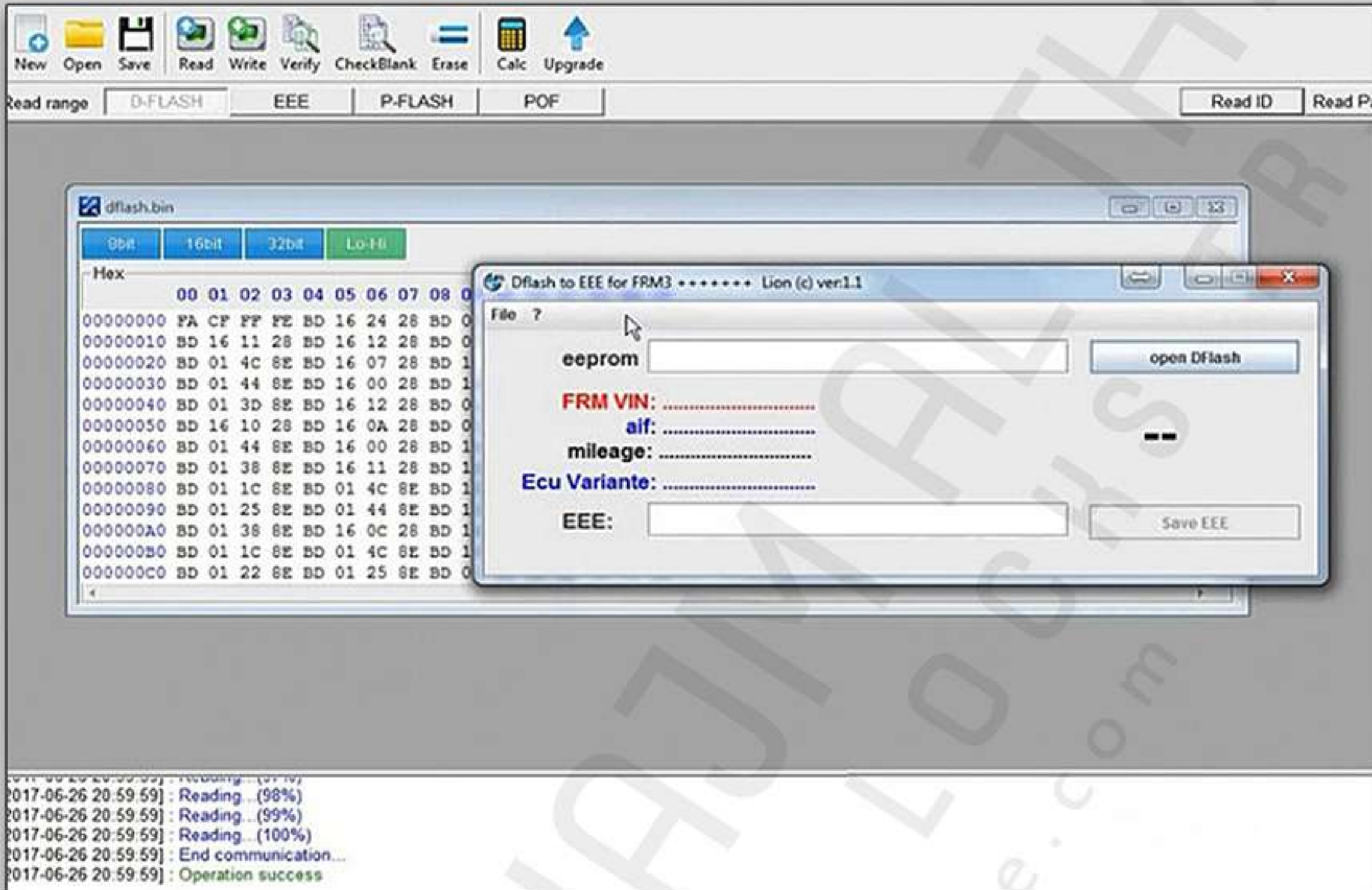
Step 2: Dflash to Eeprom

Open Dflash to EEE for FRM3 Software, upload Dflash data just read

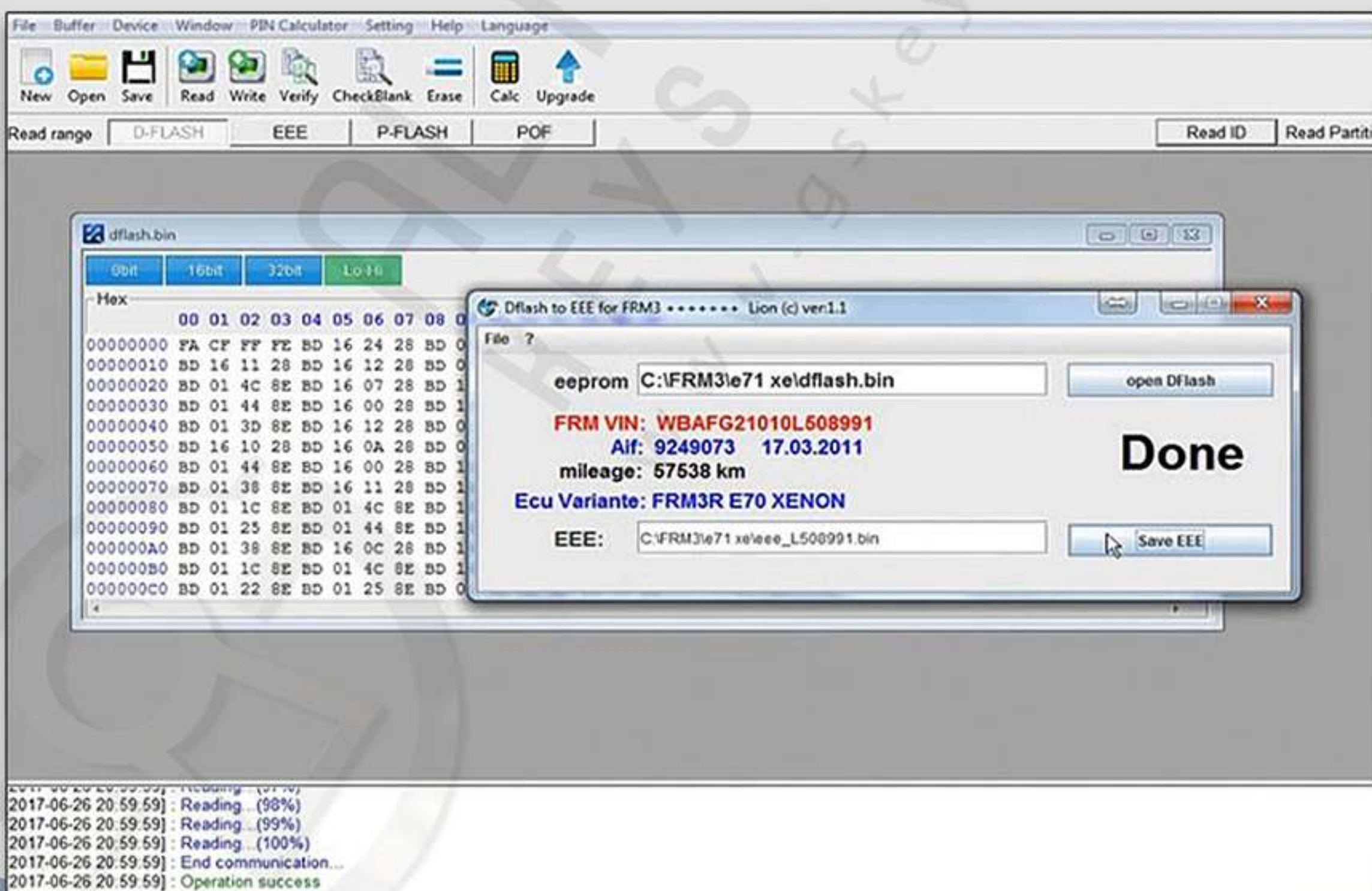
Then convert Dflash to eeprom.

(You can use free online FRM3 D-Flash to EEPROM converter here as well:

<http://tlvps.tomvanleeuwen.nl/frm/>)



Save eeprom, i.e: eee_L508991.bin



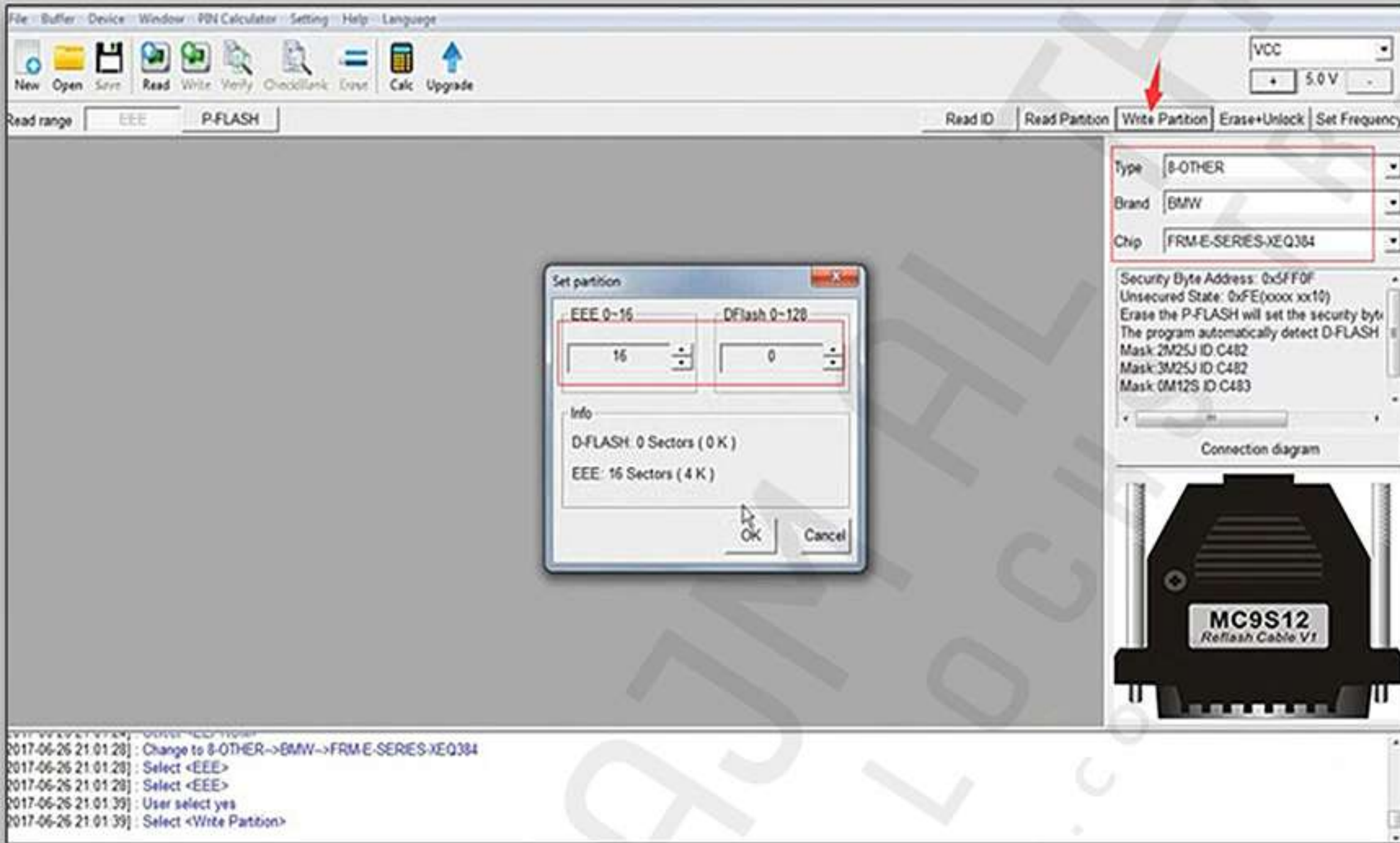


Step 3: Write EEPROM

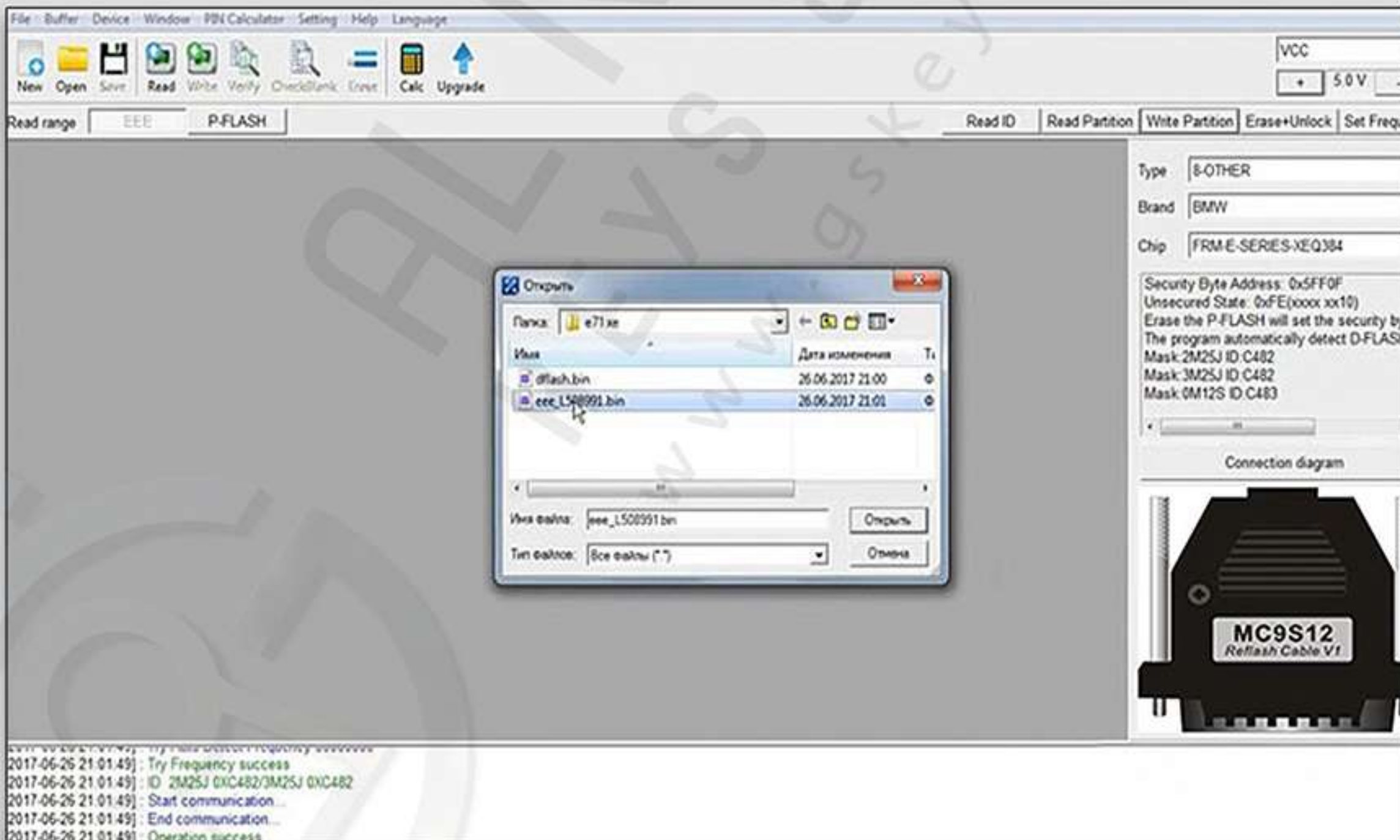
Back to [VVDI Prog software](#), select Type 8-Others->BMW->FRM E-series XEQ384

Click Write Partition (will erase Dflash and eeprom data)

Write EEPROM partition to 16 sectors (4K), DFLASH: 0 sector

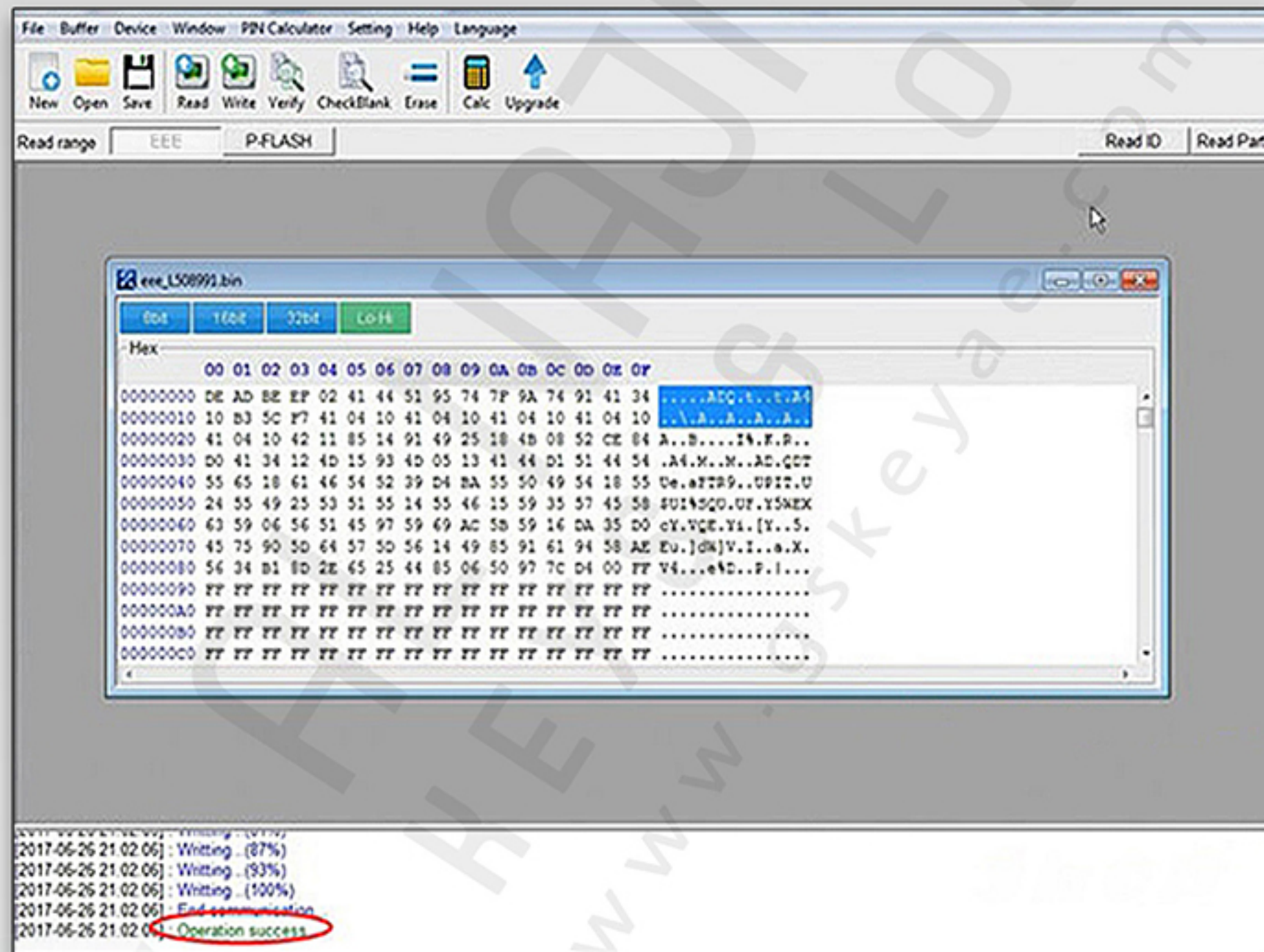
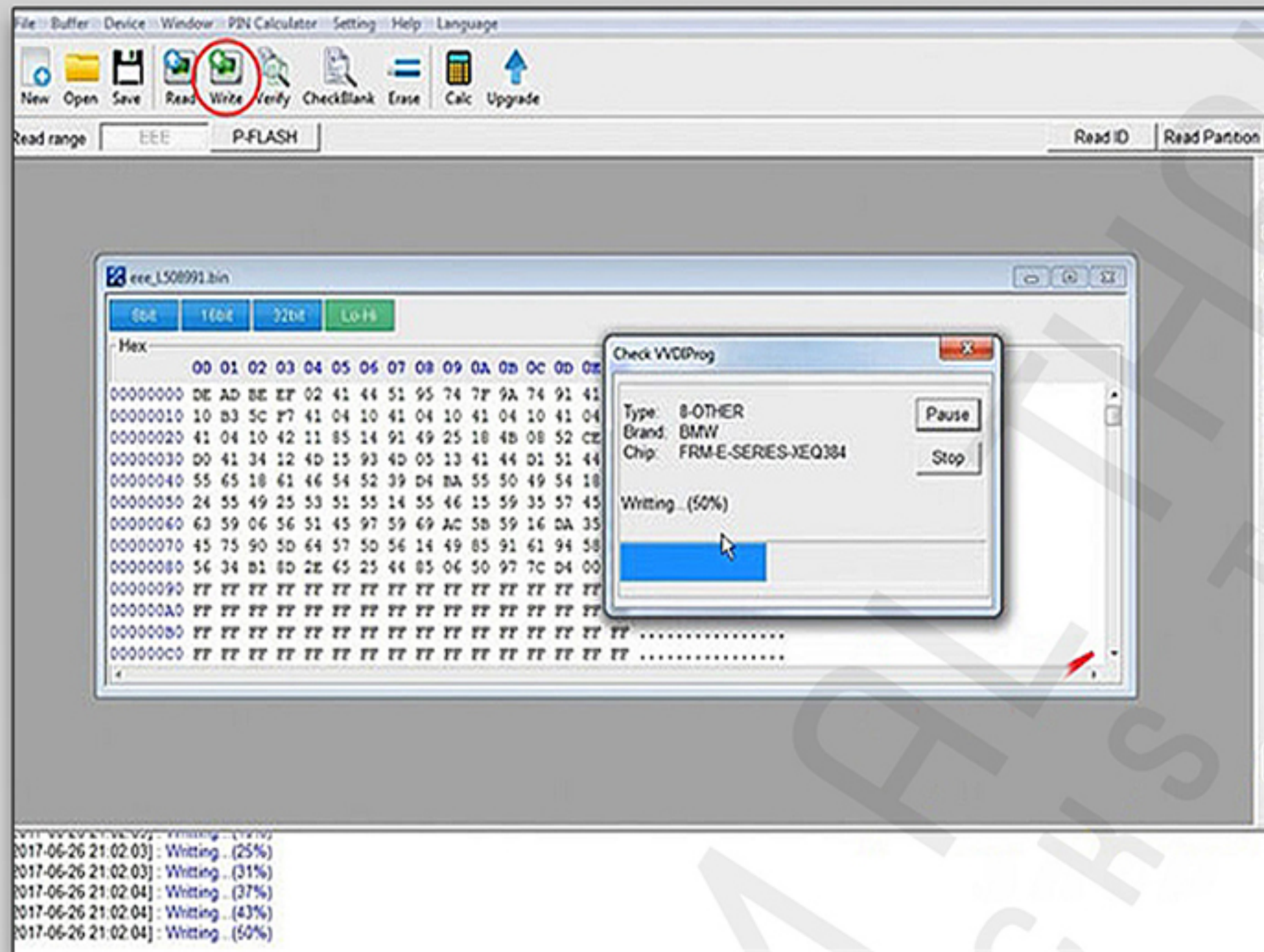


Open EEPROM data just converted from Dflash





Click Write tab to write eeprom



Reset FRM success.

Install FRM module back to vehicle.

Vedio from:

<https://www.youtube.com/watch?v=KfMRkBw5NU0>



BMW FRM 2M25J/3M25J(9S12XEQ384) pinout to VVDI-Prog

BMW FRM 2M25J/3M25J(9S12XEQ384) 2016.03.01 Rev.1.0

属性 Property : (2M25J/3M25J)
D-FLASH:0KB(Auto Detect Memory Size)
EEE :4KB(Auto Detect Memory Size)
P-FLASH:384KB

接线说明 Wiring Instructions :
连接器 : MC9S12 Reflash Cable V1

GROUP1:
GND
VCC

GROUP2:
紫线 Purple Line (BKGD)
黄线 Yellow Line (RESET)



BMW FRM F-series 2M25J (MC9S12XET512) pinout to VVDI Prog

BMW FRM F-SERIES 2M25J(MC9S12XET512) 2016.12.20 Rev.1.0

属性 Property : (2M25J)
D-FLASH:32KB(Auto Detect Memory Size)
EEE:0KB(Auto Detect Memory Size)
P-FLASH:512KB

接线说明 Wiring Instructions :
连接器 : MC9S12 Reflash Cable V1

GROUP1 :
GND
VCC

GROUP2 :
紫线 Purple Line (BKGD)
黄线 Yellow Line (RESET)



AL NAJM AL THAHABI
KEYS & LOCKS TR.
www.gskeyae.com

About us

Al Najm Al Thahabi - GSKEYAE-COM - is the premier wholesale auto locksmith supplier of car keys, key fobs, key programming tools, key cutting machines and more.

www.gskeyae.com

If you need software activation for VVDI Prog, VVDI2, VVDI MB key programmers, and more, we've got you covered!

Visit our blog at gskeyae.cloud to find and download everything you need.

<https://gskeyae.cloud/>

